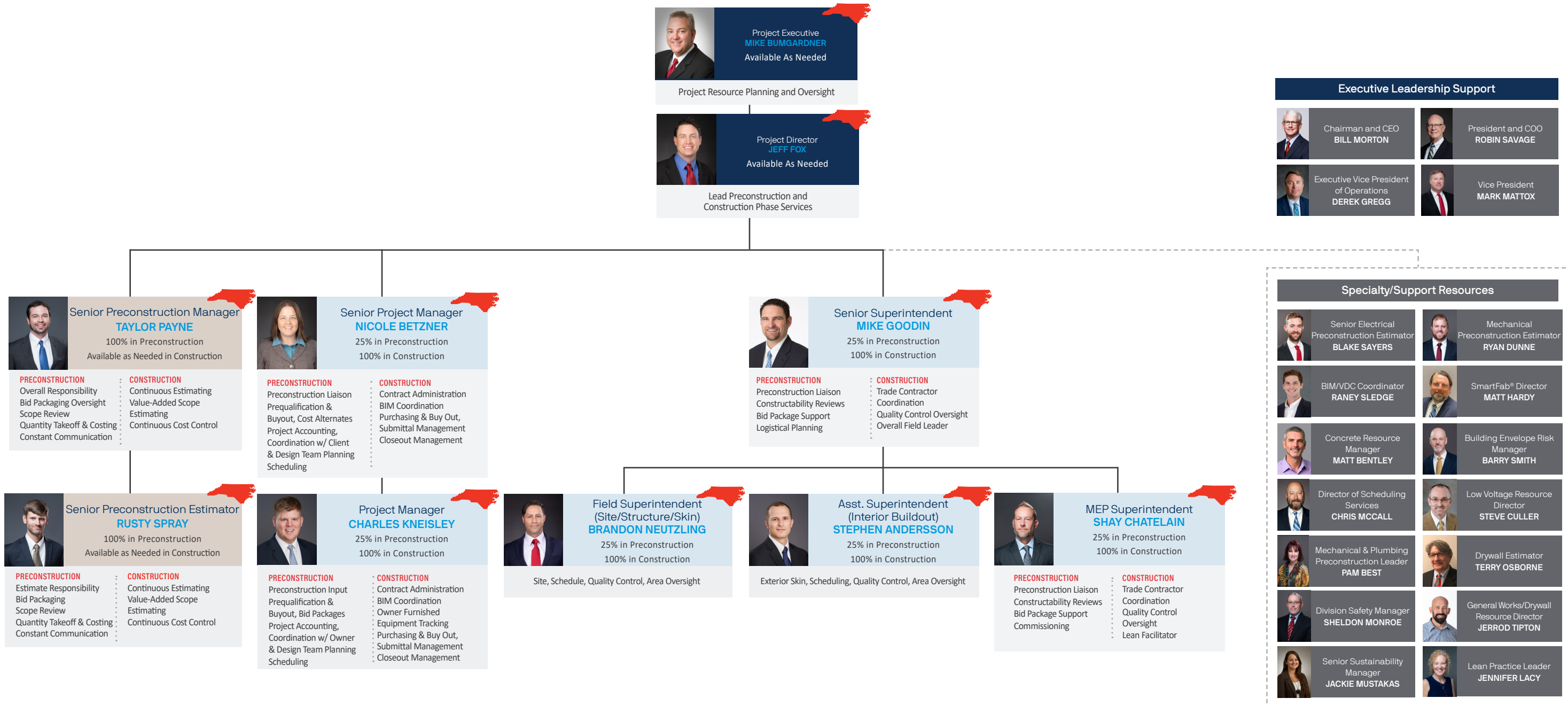


AdventHealth Buncombe County - New Hospital Proposed Organizational Chart

Robins & Morton believes partnering is the key to our success. This partnering approach begins with a thorough project plan and organization. Based on our understanding of the project scope, this organizational chart shows our key personnel for this project, their responsibilities for the preconstruction and construction phases, and the percentage of time they will be committed to this project.



Executive Leadership Support

Chairman and CEO BILL MORTON	President and COO ROBIN SAVAGE
Executive Vice President of Operations DEREK GREGG	Vice President MARK MATTOX

Specialty/Support Resources

Senior Electrical Preconstruction Estimator BLAKE SAYERS	Mechanical Preconstruction Estimator RYAN DUNNE
BIM/WDC Coordinator RANEY SLEDGE	SmartFab® Director MATT HARDY
Concrete Resource Manager MATT BENTLEY	Building Envelope Risk Manager BARRY SMITH
Director of Scheduling Services CHRIS MCCALL	Low Voltage Resource Director STEVE CULLER
Mechanical & Plumbing Preconstruction Leader PAM BEST	Drywall Estimator TERRY OSBORNE
Division Safety Manager SHELDON MONROE	General Works/Drywall Resource Director JERROD TIPTON
Senior Sustainability Manager JACKIE MUSTAKAS	Lean Practice Leader JENNIFER LACY